

CARTRIDGE FILTERS G-1

PN 25 / ANSI 150

Cylindrical PN 25/ANSI 150 cartridge filters, as per EN 60.620 and EN 60.621, provided with a filtering cartridge made of pleated synthetic fibre with aluminium threads and supported by a cadmium steel casing.

The filtering cartridge is located inside a nodular cast container with the entry and exit connections adapted so that the necks can be connected with flanges of DIN PN 25/40 at diameters DN 25, DN 40 or DN 50 and connections ANSI 150 at diameters of 1", 1 1/2" or 2", with the possibility of combining different standards and diameters across the entry and exit points. They comply with the 97/23EC directive.

TECHNICAL FEATURES:

Max Pressure:	25 bar / ANSI 150
Available flanges:	DN 25, DN 40, DN 50
Assembly position:	As photograph $\pm 60^\circ$
Operational temp.:	-10 ^o to 50 ^o C
Filtering capacity:	5 μ

Materials

Regulator body:	Spheroid cast iron
Joints:	Nitrile
Manifold:	Steel
Differential pressure gauge:	PN 100
Scale inlet pressure < 1 bar:	0-150 mbar
Scale inlet pressure < 6 bar:	0-600 mbar
Scale inlet pressure \leq 25 bar:	0-1000 mbar
DIN PN 25 flanges:	DN 25, DN 40, DN 50
ANSI 150 flanges:	1", 1.1/2" and 2"
Certification:	As per directive PED 97/23 CE for pressurised containers

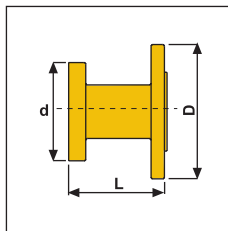
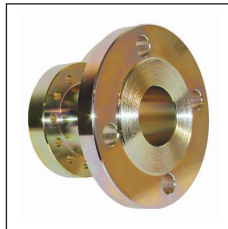
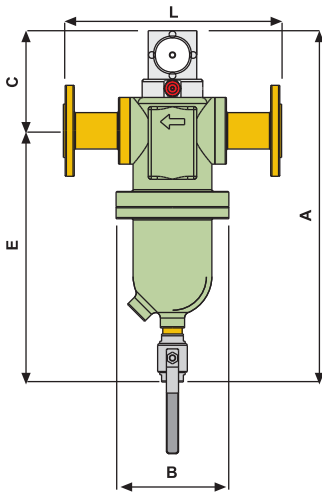
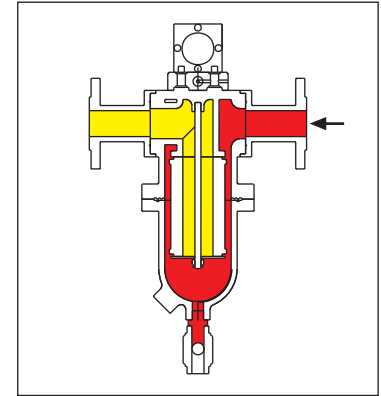


It comes with a group made up of a manifold valve and an auto differential pressure gauge connected bi-directionally to allow the elimination of the pressure gauge connection tubing. The manifold has an entry and exit pressure intercommunication valve for checking the differential pressure gauge. The typical application is for high pressure regulation and measurement stations or stations where a very low load loss is required in the filter.

The filter is extraordinarily easy and efficient to clean since the cartridge is suspended from the upper filter body, so that dirt accumulates on the lower body. This dirt can be eliminated by opening the purge valve or separating the lower body and cleaning the resulting container of sediment and dirt.

CARTRIDGE FILTERS G-1 PN 25 / ANSI 150

Code	Article		Weight
MA.8.25.0000	Cartridge filter G-1	PN 25/ANSI 150 (without flanges)	27,00 kg
MA.7.DIN25	Neck flange	DN25 PN 25/40	2,55 kg
MA.7.DIN40	Neck flange	DN40 PN 25/40	3,50 kg
MA.7.DIN50	Neck flange	DN50 PN 25/40	4,25 kg
MA.7.ASA25	Neck flange	1" ANSI 150	2,10 kg
MA.7.ASA40	Neck flange	1.1/2" ANSI 150	3,05 kg
MA.7.ASA50	Neck flange	2" ANSI 150	3,80 kg



DIMENSIONS filter in mm

Models	A	C	E	BØ	L
G-1	580	165	415	186	360
G-1.5	in project				

DIMENSIONS neck in mm for filter G-1

Models	D	d	L
DN 25 PN 25	115	110	110
DN 40 PN 25	150	110	110
DN 50 PN 25	165	110	110
1" # 150	107,9	110	110
1.1/2" # 150	127	110	110
2" # 150	152,4	110	110

DIMENSIONS neck in mm for filter G-1.5

Models	D	d	L
DN 50 PN 25			
DN 65 PN 25			
DN 80 PN 25			
2" # 150	in project		
2.1/2" # 150			
3" # 150			